

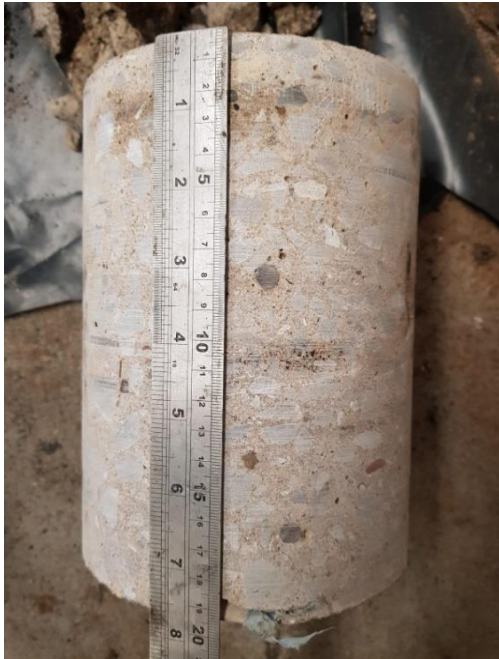
Concrete Core Log 1:


GL - 0.20m Concrete Slab.

Complete Slab 194mm - 200mm thick, 40% aggregates of fine subrounded flint.

Reinforced with 7mm diameter rebar at 80mm and 165mm from surface.

Terram underneath slab.



Project:	Swansea		Title	Concrete Core Log 1		
Client:			Unit 13, Firmland Park Estate, Henfield Road, Albourne, West Sussex, BN6 9JJ		 OAKLAND site investigation	
Ref No:	180907	Revision:				1
Drawn:	RS	Date:				27/09/2018
Figure:	1	Scale:				N/a


Concrete Core Log 2:

GL - 0.178m Concrete Slab.

Complete Slab 174mm - 178mm thick, 40% aggregates of fine subrounded flint.

Reinforced with 5mm and 7mm diameter rebar at 70mm, 77mm, 100mm and 150mm from surface.



Project:	Swansea		Title	Concrete Core Log 2		
Client:			Unit 13, Firmland Park Estate, Henfield Road, Albourne, West Sussex, BN6 9JJ		 OAKLAND site investigation	
Ref No:	180907	Revision:				1
Drawn:	RS	Date:				27/09/2018
Figure:	1	Scale:				N/a


Concrete Core Log 3:

GL - 0.200m Concrete Slab.

Complete Slab 200mm - 205mm thick, 40% aggregates of fine subrounded flint.

Reinforced with 7mm diameter rebar at 85mm and 170mm from surface.



Project:	Swansea		Title	Concrete Core Log 3		
Client:			Unit 13, Firstrand Park Estate, Henfield Road, Albourne, West Sussex, BN6 9JJ		 OAKLAND site investigation	
Ref No:	180907	Revision:				1
Drawn:	RS	Date:				27/09/2018
Figure:	1	Scale:				N/a