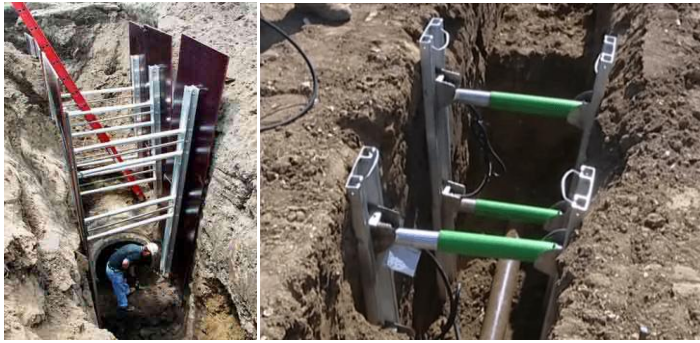




## Shoring Method Statement and Risk Assessment



The Vertishore is a lightweight compact shoring unit designed for short-term trench support in which does not require close sheeting. The unit is easily installed from ground by one man in a matter of seconds and provides safe effective shoring without operatives having to enter an un-shored excavation. Each unit comprises two aluminium rails, expanded against the trench wall by a pair of interconnected hydraulic cylinders, which are available in a range of different sizes. The cylinders fit directly into a recess in the rails and are pressured by a manually operated hydraulic hand pump, giving an uninterrupted column of strength between the trench walls. All units are designed for quick and easy installation and removal by one or two people from outside the trench.

### Method of use

Connect the hose to the inlet valve on the lower rail, ensuring the pump valve is open. Insert the release tool through the handle and place unit on trench side. Keep Folded and lower until in correct position, release and allow to unfold ensuring cylinders are horizontal. Still holding the release tool, close the pump valve and pump to approximately 500psi as shown on the pump gauge, ensuring pressure is maintained. Re-position the release tool behind the collar of the hose coupling, pull the handle towards you and the coupling will spring free.

Hazard/Risk	Type	Affected	Control Measures	Score	Residual Risk
Operating equipment Lifting and Handling	H&S	Oprs	Trained and competent operators only, including lifting and manual handling practices	2 x 3	Low
Contact with underground or overhead services	H&S	Oprs	Review positions with reference to utility plans. CAT scan each position prior to and during excavation, use hand tools with insulated handles wherever possible.	1 x 4	Low
Vibration (when breaking out with powered jack hammer)	H&S	Oprs	Limit use to 15 min continuous or 2 hours aggregated per man per day. Penetrate 25mm at a time in close centres. Noise measured as around 80-85 Db. Wear gloves, eye and ear protection at all times.	2 x 3	Low
Pit collapse	H&S	Oprs	Do not excavate below the water table. Spoil should be placed away from the sides. <b>No man entry permitted</b> except with supports in place	3 x 4	Med
Internal works (if required)	H&S	Oprs	Ensure adequate ventilation, access, and lighting. Use electrical equipment for breaking out.	2 x 4	Med